

The North Country Trail in the Chequamegon-Nicolet National Forest



The North Country National Scenic Trail is primarily a hiking trail. Horse use on the trail is discouraged. Soils on the east end of the trail tend to be fairly wet and are not particularly suitable for riding.

Mountain bikes are also discouraged and may not be ridden where the trail crosses wilderness areas. Cross country skiing is possible on the trail but is best in late winter when a crust has formed on the snow. Dog sled use is also allowed except where the trail follows the Penoque Mountain ski trail. Motorized use on the trail is prohibited under existing Forest Off-Road Vehicle Policy.

Wilderness - The North Country National Scenic Trail passes through the Rainbow Lake and Porcupine Lake Wildernesses. Only foot travel is allowed within wilderness—no motorized or mechanical transport, such as the use of bicycles, is allowed.



Camping - Camping is permitted along the trail. However, campsites must be kept at least 100 feet away from the trail or water's edge in order to protect natural features. There are two Adirondack shelters along the trail. One is located just off the trail by the Marengo River and the second is located just west of FR 604.

Water - Water is available from pumps at Lake Owen Picnic Ground, Two Lakes, Lake Three, and Beaver Lake Campgrounds. Water in streams and lakes along the trail is only safe to drink if it is boiled or treated.

Garbage and Waste - Pack out what you pack in. Burying garbage is not satisfactory because cans will usually be exposed in time through animal or frost action. Human wastes must be buried in a hole located at least 100 feet from any open water, the trail, or any campsite.

Bears - Bears frequent the area along the North Country Trail. Please be careful with food storage when you camp. It is best to suspend food supplies in a bag or pack between two trees at least 10 feet off the ground.

Fire - Fires are allowed on National Forest land but please be careful. Most locations along the trail have 1 to 4 inches of duff on top of mineral soil. The duff will burn if you build a fire on it. You must remove the duff to mineral soil before construct-

ing a small fire. All fires should be put completely out by thoroughly soaking the embers with water and then mixing them with mineral soil. In dry conditions we suggest that you use camp stoves rather than wood fires. In extremely dry conditions open fires may be prohibited. To check on fire conditions contact the US Forest Service in that district.

Parking - There is no charge for most parking areas shown on the map, however, several of the more developed parking areas are fee areas. The following areas require either a daily fee or an annual sticker: Penoque Mountain Ski Trailhead (winter only), Lake Owen Picnic Ground, Drummond Ski Trailhead.

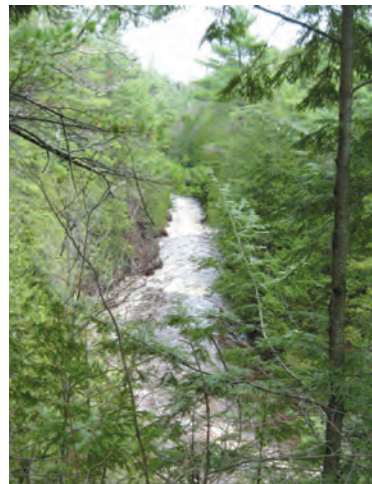


Contact - For more information on the rules and regulations with in the National Forest please contact the Forest Service at:

Washburn Ranger District:
715-373-2667

Great Divide Ranger District:
715-634-4821 (Hayward), 715-264-2511 (Glidden)

Copper Falls State Park



Waterfalls, 100+ foot canyon walls, and unique geological features dominate the landscape in the gorge of the Bad River on this certified section of NCT in Copper Falls State Park. A 65 foot CCC constructed observation tower with 250 steps offers views of the Penoque Range and Chequamegon Bay.

City of Mellen Hike & Bike Trail

Just west of the park, a segment of trail extends into the City of Mellen taking you along another part of the Bad River on the City of Mellen Hike and Bike Trail (a certified section of NCT). Mellen is one of only two trail towns in Wisconsin, where most services needed by hikers can be found.



The North Country Trail Association is a membership-driven, volunteer-based organization. The NCTA is a "friends" organization that unites the efforts of our local volunteer chapters and partner organizations with the National Park Service to build, maintain, protect and promote the North Country National Scenic Trail. The trail is a 4,600 mile footpath through the northern tier of the United States, traversing seven states. Though still under construction, more and more miles of trail are completed every year, the trail is starting to draw national attention, alongside the likes of the Appalachian and Pacific Crest Trails.

Our work uses federal dollars, membership dues and other revenues and combines them with the tremendous volunteer effort, to leverage the greatest amount of good for the trail.



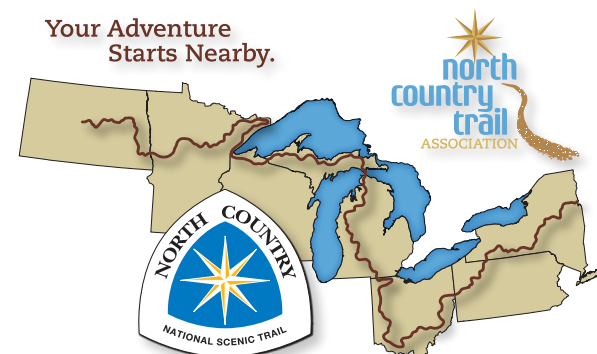
Each year nearly 1000 individuals do volunteer work on the North Country Trail. Your membership dollars not only directly support these volunteers by purchasing tools and other resources, but act as a vote of confidence in the North Country National Scenic Trail.

We hope you will join the 2,400 other members who support the North Country Trail and become a member today.

To become a member visit us on-line at:

northcountrytrail.org

or call us toll-free 1(866)-445-3628

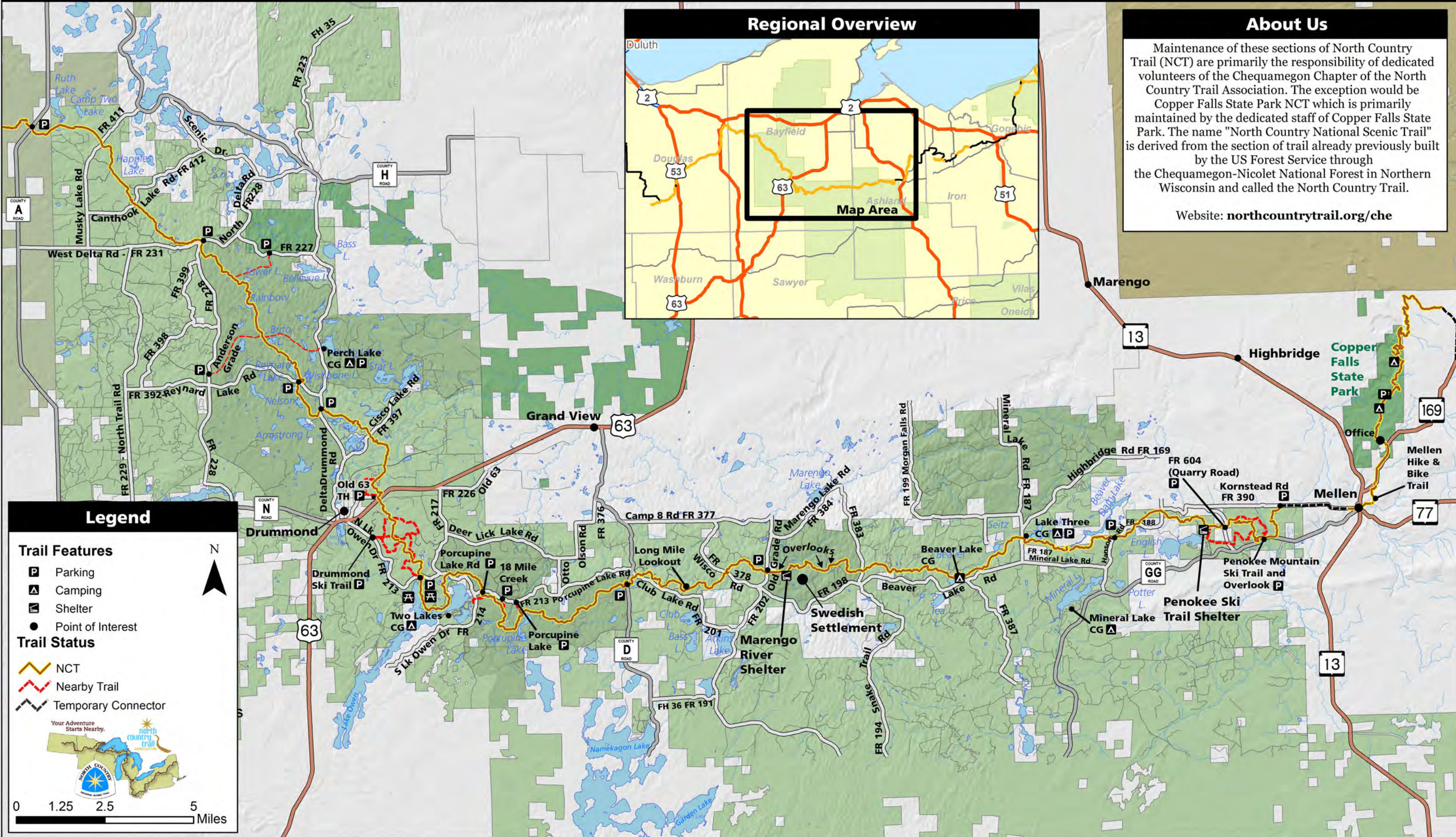


northcountrytrail.org

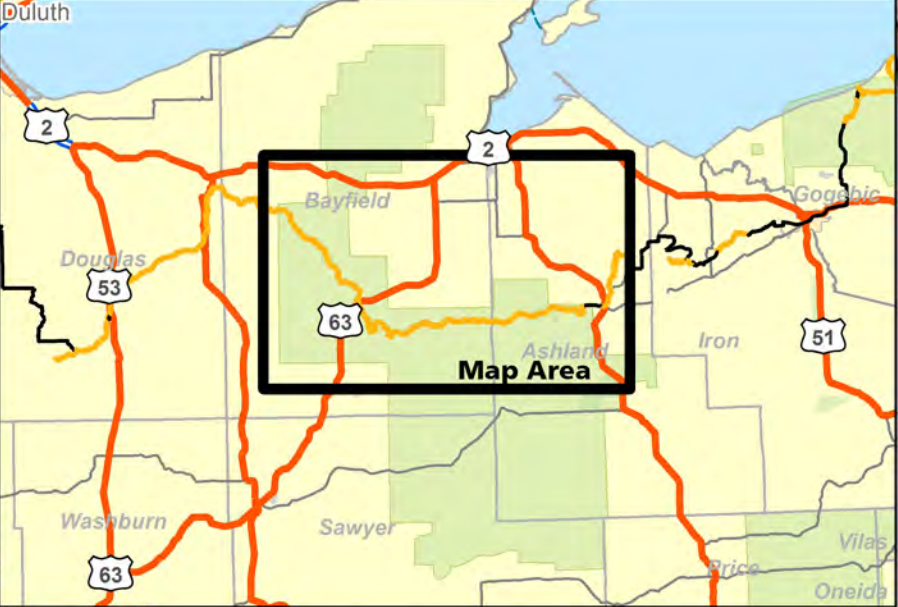


North Country National Scenic Trail

Chequamegon-Nicolet National Forest, City of Mellen and Copper Falls State Park Sections



Regional Overview



About Us

Maintenance of these sections of North Country Trail (NCT) are primarily the responsibility of dedicated volunteers of the Chequamegon Chapter of the North Country Trail Association. The exception would be Copper Falls State Park NCT which is primarily maintained by the dedicated staff of Copper Falls State Park. The name "North Country National Scenic Trail" is derived from the section of trail already previously built by the US Forest Service through the Chequamegon-Nicolet National Forest in Northern Wisconsin and called the North Country Trail.

Website: northcountrytrail.org/che

Legend

- Trail Features**
- Parking
 - Camping
 - Shelter
 - Point of Interest
- Trail Status**
- NCT
 - Nearby Trail
 - Temporary Connector

