



Town of Drummond Comprehensive Outdoor Recreation Plan 2020-2025

Bayfield County, Wisconsin



**Adopted by Resolution
Month Date, 2019**

Table of Contents

Chapter 1 - Parks and Recreation	1
Introduction	1
Benefits of Providing Parks and Amenities	3
Types of Recreational Activities	4
Parks and Recreation Goals and Objectives	5
Chapter 2 - Community Profile.....	7
Introduction	7
Historical and Projected Population	7
Age Population.....	8
Seasonal Population.....	9
Poverty	9
Demographic Summary	9
Chapter 3 - Parks and Recreational Facility Standards	10
National Recreation and Parks Association Standards	10
Park Space Standards.....	10
Park Service Boundaries.....	12
Chapter 4 - Park and Recreational Inventory and Recommended Improvements.....	13
Drummond Park.....	13
Drummond Lake Campground.....	14
Long Branch Hiking Trail	14
Visitor Center/Museum/Library	17
Chequamegon Area Mountain Bike Association Trails.....	17
North Country National Scenic Trial	17
ATV Trails	18
Snowmobile Trails.....	18
Lake Owen Access.....	19
Drummond Ski Trails.....	19
Other Recreational Facilities in Drummond	19
Standardizing Park Amenities	20

Acknowledgements

Parks and Rec Committee

Dick Fredericks, Chair

Mark Jansen, Secretary

Addie Khalar

Dale Siebert

Andy Tuttle

Town Board

Royden Bloom, Chair

Dick Fredericks, Supervisor

Chris Elkins, Supervisor

Chapter 5 - Park Development and Land Acquisition
Funding21
Funding Sources21

Chapter 6 - Plan Implementation25
5-Year Capital Improvements Plan for Parks and Recreation..... 25



Acknowledgements

Drummond Town Hall

14990 Superior Street

Drummond, WI 54832

www.drummondwi.com

Andy Tuttle, Clerk

Planning Assistance

Cedar Corporation

604 Wilson Avenue

Menomonie, Wisconsin 54751

715-235-9081

www.cedarcorp.com

Chapter I

Parks and Recreation

Introduction

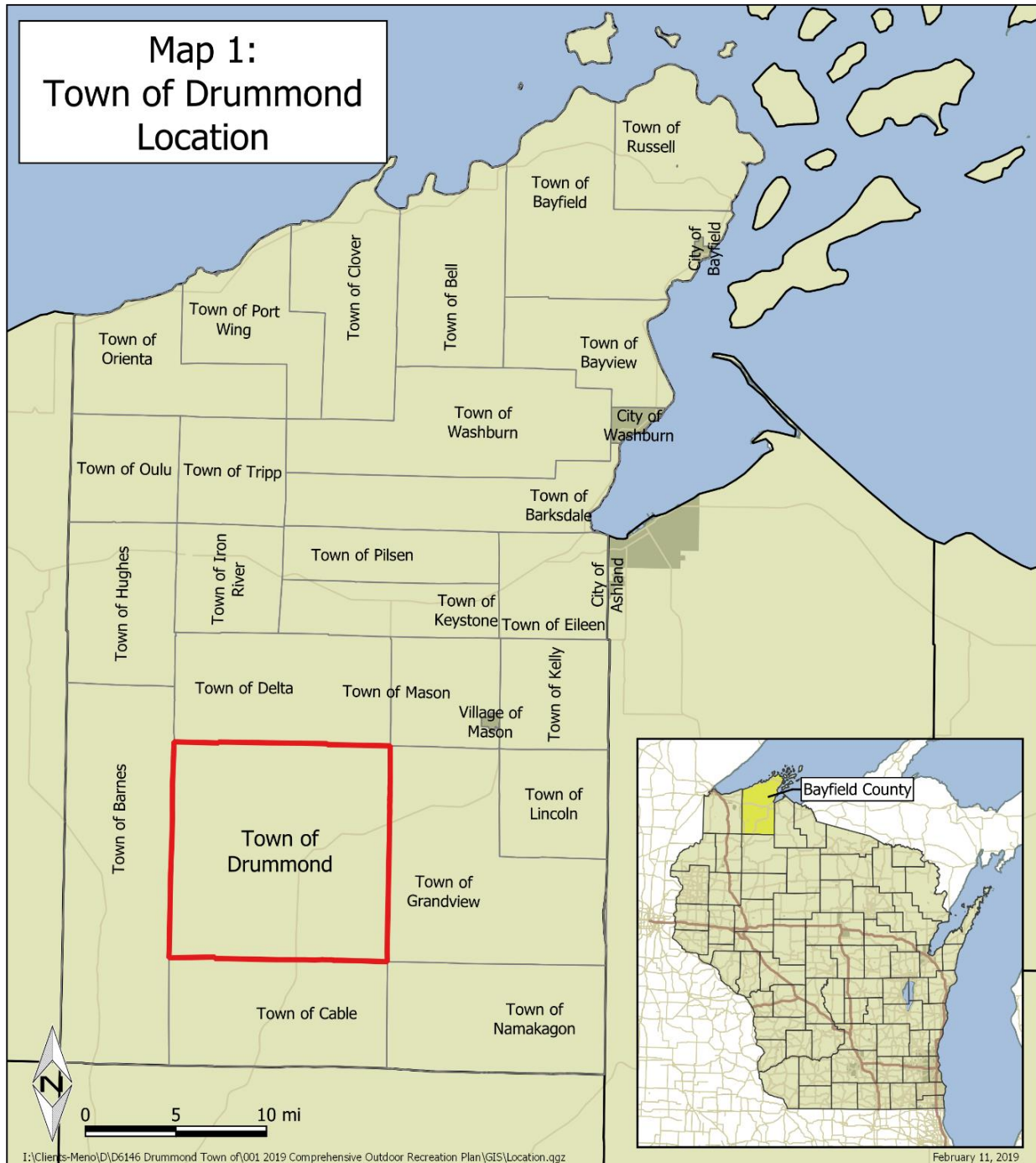
The Town of Drummond is located in northwest Wisconsin, Bayfield County between Cable and Grand View. Drummond became a Town in 1882, the same time the railroad came into effect. The Town is surrounded by the Chequamegon-Nicolet National Forest, which makes up approximately 80 percent of the Town's land.

The Town of Drummond borders the Towns of Barnes to the west, Delta to the north, Grand View to the east and Cable to the south (see Map 1). Drummond is accessed by U.S.H. 63. Over 2000 vehicles per day enter or pass through the Town of Drummond on U.S.H. 63. According to the 2010 U.S. Census Bureau, the population of Drummond was 463, but the population greatly expands in the summer months with seasonal property owners and tourists visiting to enjoy the numerous outdoor activities in the area including boating, fishing, hiking, bicycling, riding atv's and camping. During the winter months, snowmobiling and cross-country skiing are popular.

The Town of Drummond has been actively participating with Bayfield County when planning for park and recreation needs. This 5-Year Comprehensive Outdoor Recreation Plan (CORP) is the first time the Town had created its own CORP to act as a guide for acquiring and developing local parks and recreation facilities and coordinating with the WDNR, U.S. Forest Service or other entities to plan and improve their offerings to complement the Town's parks.

The Town of Drummond Comprehensive Outdoor Recreation Plan provides an inventory of existing parks and facilities, analyzes park and recreations needs, and recommends action steps that will help Drummond plan and prioritize the needs of the community and visitors.





Benefits of Providing Parks and Amenities

Parks and recreation are key for providing a quality of life to Drummond residents and visitors. The specific benefits that parks and recreation programs bring to a community cover a wide spectrum and are important when promoting the Town as a great place to be.

Environmental Benefits

- Natural areas provide wildlife habitat, improve surface water quality, provide stormwater management, improve groundwater quality and improve air quality.
- Trees and other vegetation provide shade, which reduces the need to use air conditioning.
- Children and adults can experience and connect with nature and understand the value of protecting the environment.

Health Benefits

- Parks, trails, and recreation programs allow opportunities for people to engage in physical activity at a level that fits their needs and abilities.
- Children who are active at an early age tend to stay active as adults.
- Exposure to nature can reduce stress and increase happiness.

Social Benefits

- Parks and recreation programs are inclusive with regards to income, race, and physical abilities.
- Parks provide spaces for social interaction with friends or meeting new people. These spaces provide places for community events and functions that bring people outdoors.
- Parks can create a sense of pride and ownership in the community.

Economic Benefits

- Quality parks can influence a person's or business' decision to stay in or move to your community.
- Property values tend to increase in relation to the proximity to parks.
- Parks and recreation programs can generate income for local businesses when park related events encourage people to stay overnight, go out to eat, rent bicycles or kayaks, or stop at a convenience store.

Types of Recreational Activities

It is important to keep in mind that people have different parks and recreation needs based on their age, physical ability and activity they want to take part. Recreational activities are classified as active or passive.

Active Recreation

Active recreation refers to activities for individuals or teams that require the use of special facilities such as:

- Basketball Courts
- Baseball Diamonds
- Soccer Fields
- Golf Courses
- Hockey Rinks
- Tennis Courts
- Skateboard Parks
- Playground Equipment

Passive Recreation

Passive recreation refers to activities that do not typically require developed facilities but place a priority on facilities or amenities that support the access to and enjoyment of nature. These facilities and amenities include:

- Walking, hiking and bicycling trails
- Boat ramps or canoe/kayak launch areas
- Observation decks
- Docks
- Beaches
- Benches
- Pavilions
- Picnic tables
- Restrooms
- Drinking fountains
- Bicycle racks

By providing a variety of recreational activities to the community, the Town of Drummond ensures that its parks are inclusive and accessible for users. At the same time, communities must identify what parks, recreational facilities or natural features are unique to them and can be used and promoted in a positive way.

Parks and Recreation Goals and Objectives

The function of all plans, whether in our personal lives or in our community, is to identify goals and achieve measurable objectives.

Goals are statements of desired outcomes or achievements. They are general in nature. Objectives are more specific and identify measurable outcomes.

As a community's desires and needs change, so too must its goals and objectives. The following goals and objectives represent the ends to which the priorities and recommendations in this plan are directed. These goals and objectives will provide a sound basis for future planning decisions in the communities with regard to parks and recreation.

Goal 1: Work with volunteers, outdoor groups, and government agencies to plan and implement park and recreation projects.

Objectives:

1. Build on existing cooperative efforts between the Town of Drummond, governmental agencies and non-governmental groups to plan for and coordinate a wide variety of park and recreational opportunities.
2. Prioritize park and recreational facility improvements and apply for WDNR grants or other funding to minimize costs.
3. Work with outdoor groups, service organizations and volunteers to complete park and recreational facility maintenance or new improvements.

Goal 2: Provide handicapped accessible park facilities and recreational opportunities to meet the needs of all park users.

Objectives:

1. Conduct an ADA Accessibility Audit of park facilities and amenities.
2. Increase the variety of recreation opportunities for the disadvantaged, young, old and handicapped residents and visitors.
3. Participate in federal and state financial aid programs to improve ADA accessibility.

Goal 3: Preserve and protect sensitive natural resource areas and habitats.

Objectives:

1. Utilize and maintain natural areas for passive parks, trails, and educational purposes.
2. Preserve and protect surface waters, wetlands, shore lands, and floodplains to maintain wildlife habitat.
3. Conserve, promote and provide access to natural areas.

4. Utilize the variety of grant opportunities offered by the WDNR and Department of Transportation to fund improvements to park and recreational opportunities in the Town.
5. Utilize public and private foundations and donations to fund park land acquisition, park amenities, or provide improved park and recreational opportunities in the Town.

Figure 1 lists the State of Wisconsin’s Outdoor Recreation goals. Many of Drummond’s goals support the State’s vision.

Figure 1 State of Wisconsin’s Goals for Outdoor Recreation



Source: WDNR State Comprehensive Outdoor Recreation Plan 2019-2023

Chapter 2

Community Profile

Introduction

The Wisconsin Demographic Services Center and U.S. Census provide statistical data for the population of all municipalities in the State of Wisconsin. The statistical data, or demographics, for the Town of Drummond will be used to identify trends related to population growth, income, and age distribution that will be analyzed and considered when looking at future park needs.

Additionally, the Town of Drummond has several public facilities that are not typical for a Town such as a public library, community center and a kindergarten through 12th grade school district. These public areas offer additional recreational resources to residents and visitors.

Historical and Projected Population

The Town of Drummond started as a logging company owned Town in the 1880's. Drummond's population had grown to over 1,000 residents by 1930. However, the closing of the lumber mill led to the decline in population (see Table 1).

Table 1: Historical Population: Town of Drummond

Year	1970	1980	1990	2000	2010
Population	349	442	417	541	463
% Change	-	26.6%	-5.7%	29.7%	-14.4%

Source: U.S. Census Bureau

Over the next 20 years, Drummond's population is expected to continue to decline (see Table 2). The Wisconsin Demographic Services Center estimates that the Town of Drummond will have 325 residents by 2040. As such, any actions taken related to the development of parks and recreation areas must take into consideration this potential change of population.

Table 2: Projected Population: Town of Drummond

Year	2010*	2018 est.	2020	2025	2030	2035	2040
Population	463	434	425	410	385	355	325
% Change	-	-6.3%	-2.1%	-3.5%	-6.1%	-7.8%	-8.5%

Source: U.S. Census Bureau, Wisconsin Demographic Services Center 2013/12/10

Age of Population

When planning for parks and recreational facilities, it is important to consider the age distribution of residents. Figure 2 shows the age distribution of residents in the Town using a population pyramid.

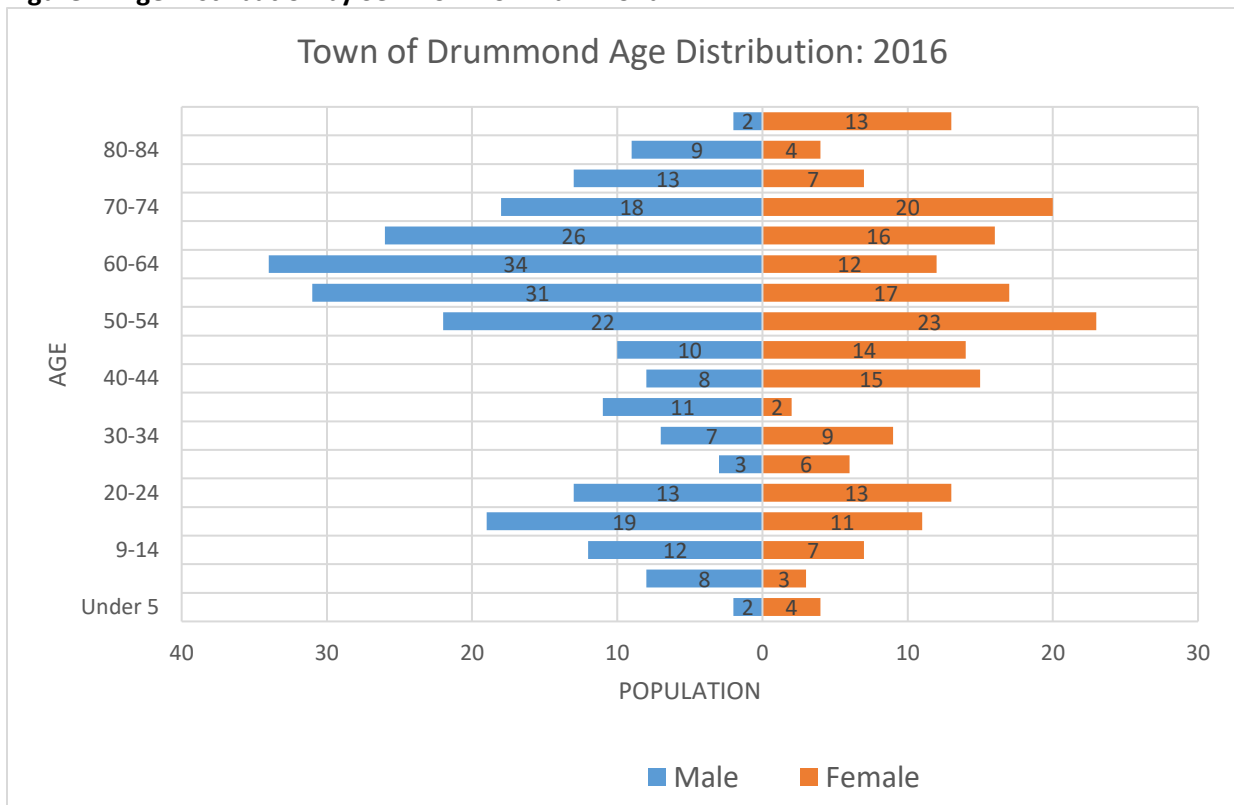
The population pyramid shows that the Town population growth is shrinking due to the relatively uneven distribution of the population within the different age ranges. The majority of Drummond residents are working or retirement aged adults.

Currently, the estimated median age of the population is as follows:

Median Age: 56.3
 Median Age: Male: 58.8
 Median Age: Female: 52.8

The median age of a Wisconsin resident is 39.2.

Figure 2: Age Distribution by Sex: Town of Drummond



Source: A

Seasonal Population

As referenced previously, the lakes, trails, and other amenities around the Drummond area attracts a sizeable seasonal population. According to the U.S. Census Bureau, approximately 438 of the total 693 homes located within the Town were reported for seasonal, recreational, or occasional use in 2010. The Town's park and recreational facilities see a significant increase in use due to this seasonal population, predominantly in the summer months.

Poverty

The 2013-2017 American Community Survey shows that 10.6% of all Town of Drummond residents lived below the poverty level compared to 11% of residents in Bayfield County. This may impact the use of fees for some parks or recreational facilities.

Demographic Summary

In general, the Town of Drummond is an aging community with a projected decreasing population. The Town has a large number of seasonal home which brings people into the community, especially during the summer month.

Chapter 3

Parks and Recreational Facility Standards

National Recreation and Parks Association Standards

The National Recreation and Park Association (NRPA) provides guidelines for classifying parks and open spaces. These are meant to act as a baseline to compare to help assess a community's offerings. The guidelines shown in Table 4 provide a description of each classification, size of the park or open space and the area it serves. By mapping the location, classification, and services areas of the Town's parks, gaps in service can be identified and addressed in the Comprehensive Outdoor Recreation Plan.

Although the NRPA provides guidelines for parks and open space, the unique landscape and development patterns of the community will influence the types of parks and facilities that are offered. For Drummond, the numerous lakes, state natural area, national forests and trails provide access to recreational opportunities that many communities don't have.

Park Space Standards

The National Recreation and Parks Association (NRPA) provides recommendations for the types of parks and number of park acres per 1,000 residents that communities can use for a baseline when evaluating parks and open space. The three (3) types of parks and their recommended acreages include:

- Mini-Parks: 0.25 to 0.5 acres per 1,000 residents
- Neighborhood Parks: 1 to 2 acres per 1,000 residents
- Community Parks: 5 to 8 acres per 1,000 residents

The three park classifications provide a range of 6.25 to 10.5 total acres of parkland per 1,000 residents. These three park classifications are generally considered the main components of a park system. Other park classifications such as Large Urban Park, Natural Resource Area, and Special Use Area, are unique to each community, therefore, recommended space needs are not provided.

The only Town of Drummond park that fits within the three main categories is the seven acre Drummond Park adjacent to Drummond Lake. The park provides water access and boating facilities but also playground equipment, swimming area, picnic area, shelter with kitchen and restrooms. Drummond Park is classified at a Community Park and serves a wide range of users including all residents who live in the "downtown" area.

Table 4 National Recreation and Parks Association Park Classification System

<p>Mini-Park</p> <p>Description: Mini-Parks serve a concentrated population or specific age group or function but can serve persons of all ages located in the immediate area. They typically contain children’s playground equipment and passive amenities such as benches and shelters.</p> <p>Service Area: Less than 1/4 mile radius</p> <p>Recommended Size: 1 acre or less</p> <p>Acres/1,000 Residents: 0.25 to 0.5 acres</p>
<p>Neighborhood Park</p> <p>Description: Neighborhood Parks are the foundation of the park system and serve as the recreational and social focus of the neighborhood. These parks serve residents in a variety of age groups. The park should be easily accessible and access should be uninterrupted by major roads or other barriers. Parking may be necessary.</p> <p>Service Area: 1/4 mile to 1/2 mile radius</p> <p>Recommended Size: 5 to 10 acres</p> <p>Acres/1,000 Residents: 1.0 to 2.0 acres</p>
<p>Community Park</p> <p>Description: Community Parks are diverse in nature and serve a broader purpose than the neighborhood or mini parks. They are larger than neighborhood parks and are intended to serve a larger area. Community parks usually have both day and evening activities. Community parks include a mix of active and passive activities and attract users of all ages.</p> <p>Service Area: 1/2 mile to 3.0 mile radius</p> <p>Recommended Size: More than 10 acres</p> <p>Acres/1,000 Residents: 5.0 to 8.0 acres</p>
<p>Large Urban Park</p> <p>Description: Large Urban Parks serve a broader purpose than community parks and are used when community and neighborhood parks are not adequate to serve the needs of the community. Focus is on meeting community based recreational needs, such as a soccer complex, as well as preserving unique landscapes and open spaces.</p> <p>Service Area: Community-wide</p> <p>Recommended Size: 50 acres or more</p> <p>Acres/1,000 Residents: N/A</p>
<p>Natural Resource Areas</p> <p>Description: Lands set aside for preservation of significant natural resources, remnant landscapes, open space and visual aesthetics/buffering.</p> <p>Service Area: Varies</p> <p>Recommended Size: N/A</p> <p>Acres/1,000 Residents: N/A</p>
<p>Special Use Parks or Areas</p> <p>Description: Special Use Parks include specialized recreational activities that are often unique to a community. Activities can include boat ramps, campgrounds, golf courses or beaches. These parks usually provide amenities that serve the entire community as well as visitors from beyond the district and are typically a single use park.</p> <p>Service Area: Varies</p> <p>Recommended Size: N/A</p> <p>Acres/1,000 Residents: N/A</p>
<p>School Parks and Facilities</p> <p>Description: School Parks and Facilities can fulfill the space requirements for other classes of parks such as neighborhood, community, sports complex, and special use parks. Access to these facilities may be limited during school hours.</p> <p>Service Area: Varies</p> <p>Recommended Size: N/A</p> <p>Acres/1,000 Residents: N/A</p>

Source: National Recreation and Parks Association

Park Service Boundaries

The National Recreation and Parks Association (NRPA) provides recommendations for the area served by community parks, neighborhood parks, and mini-parks. The three (3) types of parks and their recommended service areas include:

- Community Parks: 0.5 to 3 mile service radius
- Neighborhood Parks: 0.25 to 0.5 mile service radius
- Mini-Parks: up to 0.25 mile service radius

Drummond Park is classified at a Community Park and the service radius covers all residents who live in the “downtown” area. Generally speaking, the Town has enough park space to serve its core residents and visitors and new park space is not a priority at this time.

Chapter 4

Park and Recreation Inventory and Recommended Improvements

The Town of Drummond is located within the Chequamegon-Nicolet National Forest Washburn Ranger District and is surrounded by numerous State Natural Areas. The unique location of the Town offers residents and visitors ample access to a wide variety of both active and passive activities.

Town staff conducted an inventory of the existing park and recreation facilities available within the Town. Creating a park inventory is the first step in determining the future park and recreational facility needs of the Town.

A description of each park and recreation facility within the Town of Drummond is provided and includes the size, location, jurisdiction, amenities, and recommended improvements for each park or recreational amenity.

Drummond Park

Drummond Park is located on a 7.0 acre parcel at the end of Drummond Lake Road. It is adjacent to Drummond Lake. The Park provides water access and a number of amenities and facilities that make this a park for the entire community and visitors. Drummond Park is owned and maintained by the Town of Drummond.

Existing Facilities:

- 30' X 60' shelter with kitchen
- Swimming beach
- Picnic area with grills
- Playground structure and swing set
- Boat Ramp with pier
- Vault toilets
- Parking Area



Drummond Park Playground Equipment

Recommended Improvements:

- Improve overall drainage
- ADA accessible fishing pier
- ADA accessible flush toilets
- Repair floor in shelter kitchen
- Dredge / vegetation removal from boat ramp and swimming beach

Drummond Lake Campground

Drummond Lake Campground is located on Drummond Lake Road and across the street from Drummond Park (see Map 2). The Campground is on a 40 acre parcel and is the trailhead for an extensive ATV trail system with public parking, showers and restrooms. Within a short walk, campers can visit the Drummond Library, Historic Museum and Visitor Center plus many businesses. Drummond Lake Campground is owned and maintained by the Town of Drummond.

Existing Facilities:

- 4 seasonal camping sites with electric, water and sewer
- 11 camping sites with electric, water and sewer
- 6 camping sites with electric
- 20' X 20' shower house with pay showers and restrooms
- Dump Station
- Parking Area



Drummond Lake Campground Restrooms and Showers

Recommended Improvements:

- Develop additional electric, water and sewer sites (see Map 3)
- Develop primitive tent sites
- Develop privacy landscaping
- Install barriers around parking area

Long Branch Hiking Trail

The Long Branch Hiking Trail begins at the boat ramp at Drummond Park. The Trail is owned and maintained by the Town of Drummond.

Existing Facilities:

- Trailhead located at boat ramp on Drummond Lake
- 'Out and back' single path hiking trail with bridges and boardwalk

Recommended Improvements:

- Provide interpretive signs for historic aspects along trail
- Develop return loop trail
- Develop map with historical context of trail



Long Branch Creek Trail Sign

DRUMMOND LAKE

Proposed Primitive
Camping Sites

FUTURE
RESTROOM

DRUMMOND LAKE ROAD

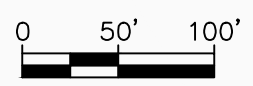
(8) PRIMITIVE TENT SITES
(CALL-OUT)

Proposed Camping Sites

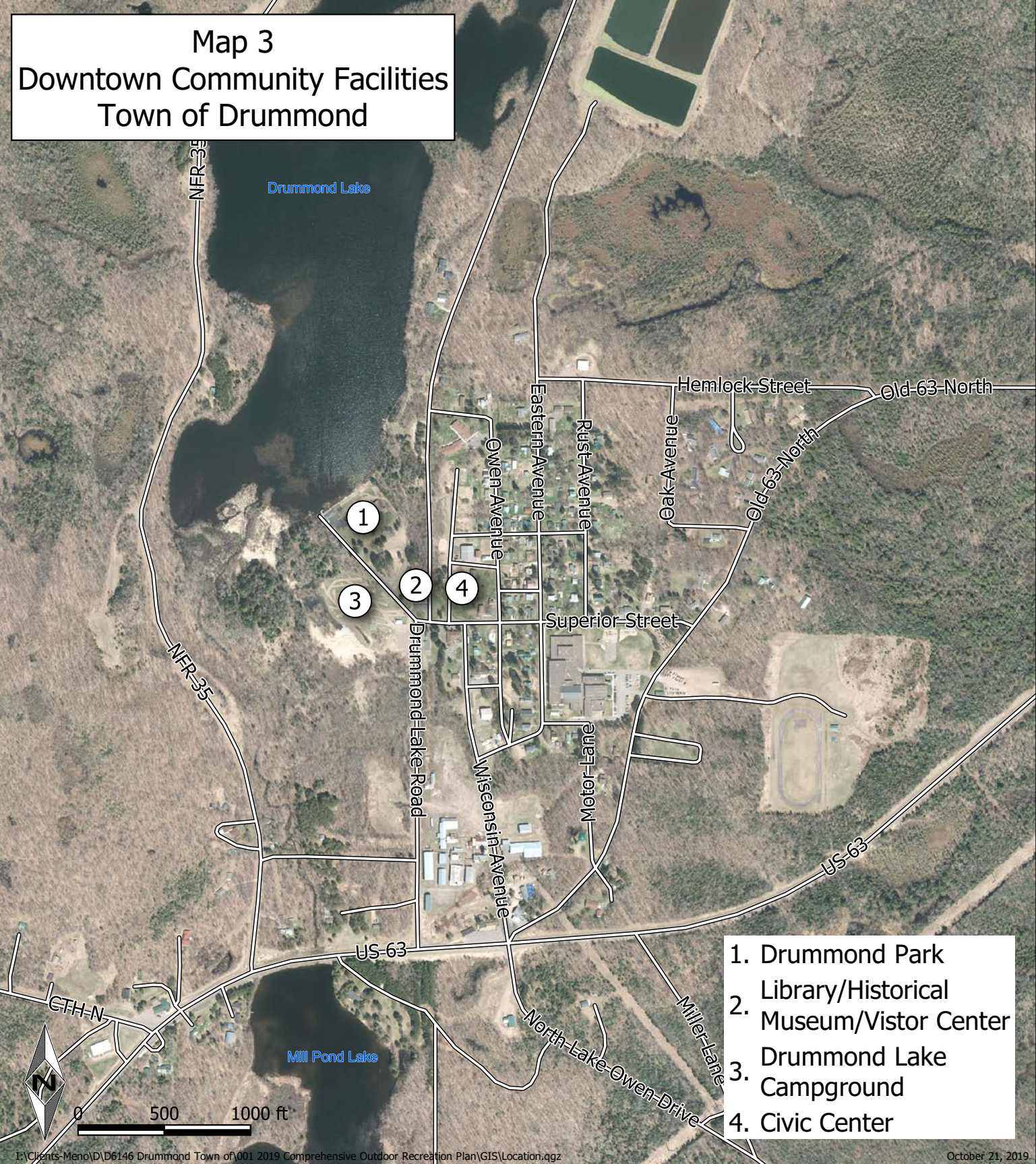
Existing Camping Sites

**Proposed Expansion
Drummond Lake Campground**
Town of Drummond, Bayfield County, WI

Map 2



Map 3 Downtown Community Facilities Town of Drummond



- 1. Drummond Park
- 2. Library/Historical Museum/Vistor Center
- 3. Drummond Lake Campground
- 4. Civic Center

Visitor Center/Museum/Library

The Drummond Public Library provides a wide range of services to campers, residents and visitors. Inside the Public Library is the Drummond Historical Museum that provides children and adults a chance to see old photos and logging artifacts on display. There is also an exhibit of animals living in the Chequamegon National Forest in Northern Wisconsin. The Public Library also serves as the Visitor Center for the Town. The Public Library, Historical Museum and Visitor Center is located at 14990 Superior Street.

Existing Facilities:

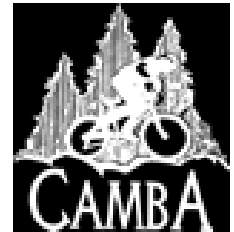
- Visitor Center located in Library/Museum building
- Benches
- Historic bell tower and log

Recommended Improvements:

- Provide area for maps and brochures outside for afterhours visitors
- Refurbish log
- Landscaping of hillside behind building
- Exterior painting of building

Chequamegon Area Mountain Bike Association Trails

The Chequamegon Area Mountain Bike Association (CAMBA) is a volunteer non-profit group organized to support mountain bike advocacy, education, sustainable trail development and tourism in the Chequamegon Area in partnership with the U.S Forest Service, local governments and agencies and private landowners.



CAMBA is responsible for the development and management of a regional mountain bike trail system of over 300 miles. The Drummond Routes originate at Drummond Park and include three loops. Loop D1 is 15 miles with 505 feet of climbing, D2 is 20 miles with 557 feet of climbing and D3 is 46 miles with 1,781 feet of climbing.

Existing Facilities:

- Trailhead located at boat ramp in Drummond Park

Recommended Improvements:

- No current needs

North Country National Scenic Trail

The North Country National Scenic Trail bisects the Town of Drummond from the southeast corner to the northwest corner of the Town. It is a non-motorized trail used mainly for hiking and cross-country skiing and hiking.



The Chequamegon Chapter of the North Country Trail Association builds, maintains and protects the Trail. The terrain in the area is flat to gentle rolling, and steep hills can be found north, east, and northwest corner of the wilderness.

Existing Facilities:

- Approximately 15 miles of trails bisecting the Town of Drummond

Recommended Improvements

- Create 'Trail Town' status
- Improve spur trail into Town/campground
- Replace 2 small bridges on spur trail
- Build kiosks directing hikers into village center

ATV Trails

Existing Facilities:

- Approximately 26 miles of trails and 116 miles of ATV routes throughout the Town

Recommended Improvements:

- Add a trailhead kiosk
- Build access trail along Drummond Lake Road to the Drummond Lake Campground parking lot

Snowmobile Trails

Existing Facilities:

- Approximately 62 miles of trails throughout the Town

Recommended Improvements:

- Add a trailhead kiosk
- Build access trail along Drummond Lake Road to the Drummond Lake Campground parking lot

Lake Owen Access

The Lake Owen Access is a boat ramp located off Lake Owen Station Road on the northwest side of Lake Owen.

Existing Facilities:

- U.S. Forest Service property
- Town-owned pier

Recommended Improvements:

- No current needs

Drummond Ski Trails

The Drummond Ski Trails are located just south of Drummond WI in the Chequamegon National Forest and are maintained and groomed by the Drummond Area Ski Trails Association. There are 8.3 total miles of groomed trails designed for Classic technique cross-country skiing. There is a \$5.00 parking fee/\$20.00 annual fee for the use of the trail.

Existing Facilities:

- U.S. Forest Service property with vault toilet
- Approximately 8.3 miles of classical ski trails
- Trails groomed with Town equipment

Recommended Improvements:

- Add locational signs at intersections
- Trail improvements (earthwork) at curves and intersections

Other Recreational Facilities in Drummond

- USFS boat ramps on a multitude of lakes
- USFS campgrounds: Two Lakes Campground & Perch Lake Campground
- USFS picnic area and swimming beach on Lake Owen
- Approximately 115 square miles of Chequamegon National Forest Lands open to public recreation
- Bearsdale Creek and Hyatt Spring State Natural Area, Mountain Lake State Natural Area, Drummond Woods State Natural Area, Lake Owen Hardwoods State Natural Area, and Northeast Lake State Natural Area
- Approximately 140 mile of non-motorized trails (hiking, horseback riding)

Standardizing Park Amenities

Having standards for park amenities creates a uniform look that is easy for people to recognize when they are in your community. Standards can be created for each park or for the park system as a whole. The following amenities are often standardized.

- Shelters
- Trash receptacles
- Signs
- Benches
- Picnic tables

Chapter 5

Park Development and Land Acquisition Funding

Funding Sources

Most communities search for outside funding sources to offset the cost of park maintenance, land acquisition, new amenities or trails. The Wisconsin Department of Natural Resources administers a wide variety of grants that are available to local governments, tribes, conservation groups, and landowners.

Acquisition & Development of Local Parks

Eligibility & Purpose: Helps to buy land or easements and develop or renovate local park and recreation area facilities for nature-based outdoor recreation purposes (e.g., trails, fishing access and park support facilities). Applicants compete for funds on a regional basis. This grant program is part of the Knowles-Nelson Stewardship Program.

ATV Enhancement

Eligibility & Purpose: Annual funding to a non-profit organization that promotes the safe and wise use of ATVs and UTVs, ATV/UTV riding and ATV/UTV education.

ATV Patrols

Eligibility & Purpose: Issued to Wisconsin county sheriff departments that participate in ATV enforcement efforts.

ATV Trails

Eligibility & Purpose: Issued to counties, towns, cities, villages and tribes to acquire, insure, develop and maintain ATV trails, areas and routes.

Boat Patrol Grants

Eligibility & Purpose: Issued to Wisconsin counties and municipalities that participate in boating enforcement efforts.

Boating Infrastructure Grant Program

Eligibility & Purpose: **Tier 1** for smaller projects that add transient boating infrastructure to the area. **Tier 2** for larger projects and are competitively judged at the national level.

Clean Diesel Grant Program

Eligibility & Purpose: To help reduce diesel emissions from both public and private vehicle fleets across the state.

Clean Vessel Act

Eligibility & Purpose: A nationwide competitive federal grant program that provides funding to states as part of an effort to clean up the nation's waterways. The CVA encourages states to subcontract with private marinas/businesses as well as local units of government to construct projects.

Friends of State Lands

Eligibility & Purpose: Grants from this program help improve facilities, build new recreation projects and restore habitat on state properties. This grant program is part of Knowles-Nelson Stewardship Program.

Habitat Area

Eligibility & Purpose: Protects and restores important wildlife habitat in Wisconsin in order to expand opportunities for wildlife-based recreation such as hunting, trapping, hiking, bird watching, fishing, nature appreciation and wildlife viewing. This grant program is part of the Knowles-Nelson Stewardship Program.

Hunter Recruitment, Development, Training and Education Grant Program

Eligibility & purpose: The primary purpose of the Hunter Recruitment, Development, Training and Education grant program is to provide cost sharing grants to local clubs, organizations, communities, governments, Wisconsin Tribes, colleges, universities and technical schools to ensure the education, training and development of safe and ethical hunters and mentors.

Land & Water Conservation Fund - Nationally Competitive Program

Eligibility & Purpose: A nationally competitive federal program that will create or reinvigorate parks and other outdoor recreation spaces in areas delineated by the Census Bureau as comprising densely settled territory that contains 50,000 or more people. The State of Wisconsin will be able to submit two applications to compete for the available funding.

Land & Water Conservation Fund - State Program

Eligibility & Purpose: This Federal program encourages creation and interpretation of high-quality outdoor recreational opportunities. Funds received by the DNR for this program are split between DNR projects and grants to local governments for outdoor recreation activities. Grants cover 50 percent of eligible project costs.

Motorized Stewardship Grants

Eligibility & Purpose: Counties, towns, cities, villages and WI tribes are eligible to request funding for new bridges on existing funded trails, major bridge reconstruction/rehabilitation & rehabilitation of funded trails.

Recreational Boating Facilities

Eligibility & Purpose: Counties, towns, cities, villages, WI tribes, sanitary districts, public inland lake protection and rehabilitation districts and qualified lake associations for recreational boating facility projects.

Recreational Trail Program

Eligibility & Purpose: Counties, towns, cities, villages, WI Tribes, and incorporated organizations may apply for grant funding for development and maintenance of recreational trails and trail-related facilities for both motorized and non-motorized recreational trail uses. Funds from this program may be used in conjunction with the state snowmobile or ATV programs and Stewardship development projects.

Shooting Range Grant Program

Eligibility & purpose: Counties, cities, villages, townships, other governmental agencies or units, clubs or organizations, businesses or corporations and educational institutions can apply for assistance in outdoor shooting range construction, including: backstops and berms, target holders, shooting benches, baffles, protective fencing, signs, trenches, gun racks, platforms, restrooms and other items considered essential for the project by the department. Indoor ranges may be eligible as well.

Snowmobile Patrols

Eligibility & Purpose: Wisconsin county sheriff departments that participate in snowmobile enforcement efforts.

Snowmobile Trail Aids

Eligibility & Purpose: Counties and WI tribes may apply for funding to provide a statewide system of well-signed and well-groomed snowmobile trails for public use and enjoyment.

Sport Fish Restoration

Eligibility & Purpose: Counties, towns, cities, villages, tribes, sanitary districts, public inland lake protection and rehabilitation districts, and qualified lake associations may apply for grants to construct fishing piers and motorboat access projects.

Stamp Funds - Wild Turkey, Pheasant and Waterfowl

Eligibility & purpose: To provide funding to support the development, maintenance, preservation, restoration and maintenance of each species and its associated habitat in Wisconsin. All non-profit conservation organizations and units of government are eligible to apply.

State Trails

Eligibility & purpose: Applications for grants under this subprogram must be for properties identified as part of the State Trail system. It is possible for sponsors to nominate additional trails for state trail designation. The Streambank Protection Program protects water quality and fish habitat in Wisconsin by establishing buffers along high-priority waterways. This grant program is part of the Knowles-Nelson Stewardship Program.

Streambank Protection

Eligibility & purpose: The Streambank Protection Program protects water quality and fish habitat in Wisconsin by establishing buffers along high-priority waterways. This grant program is part of the Knowles-Nelson Stewardship Program.

Summer Tribal Youth Program

Eligibility & purpose: The department may, in partnership with any of the federally recognized American Indian tribes or bands domiciled in this state, establish a summer program that provides members of the tribe or band who are 13 to 19 years of age with an opportunity to work on projects related to the conservation of natural resources. The department may not provide funding that exceeds 50 percent of the eligible program costs. The tribe or band shall be responsible for the remainder of those costs.

Urban Green Space

Eligibility & Purpose: These grants help buy land or easements in urban areas to preserve the scenic and ecological values of natural open spaces for nature-based outdoor recreation, including non-commercial gardening. This grant program is part of the Knowles-Nelson Stewardship Program.

Urban Rivers

Eligibility & Purpose: These grants help buy land on rivers flowing through urban or urbanizing areas to preserve or restore the scenic and environmental values of riverways for nature-based outdoor recreation. This grant program is part of the Knowles-Nelson Stewardship Program.

Utility Terrain Vehicle Trails

Eligibility & Purpose: Counties, towns, cities, villages and tribes can apply for funds for maintenance of UTV trails, minor development, gates and signing. This is a companion program to ATV Trail Aids.

Chapter 6

Plan Implementation

5-Year Capital Improvements Plan for Parks and Recreation

One of the purposes of the Town of Drummond Comprehensive Outdoor Recreation Plan is that the community creates a vision for parks and recreation and then takes steps to see that vision through.

Table 5 list park and recreation priorities for the next 5 years.

Table 5 Town of Drummond 5-Year Capital Improvements Plan for Parks and Recreation.

Park or Area	Improvement	Year
Drummond Park	New restrooms, kitchen/pavilion floor repair	2020-2022
Drummond Campground	Expand campground with additional full hook-up sites and primitive camping sites	2020-2022

The Five-Year Capital Improvements Plan does not limit the park and recreation projects the Town can pursue. It should be used to provide direction to the Town of Drummond for major park related projects but other opportunities may arise when grant programs change or new sources of funding are made available.