

Drummond Ski Trails



CHEQUAMEGON-NICOLET NATIONAL FOREST

WASHBURN RANGER DISTRICT

The Drummond Ski Trail tucked inside a northern hardwood forest with large inclusions of white pine. The majority of the trails lay on gentle terrain. Some of the trails are managed as a part of the CAMBA Bike Trail System during the summer. The North Country National Scenic Trail traverses through this area with a portion being utilized as a part of the ski trail system in the winter.

Features

- 8.3 miles of groomed ski trails for classic cross-country skiing
- Parking area (Open 6 AM to 10 PM)
- Restroom facility
- Annual Forest User Pass, Interagency Passes (Senior, Military, Access, etc.), or daily user fee required for use of trails and facilities
- No dogs; snowshoeing; or winter fat tire bikes are prohibited from using the groomed ski trails during the winter season.
- Overnight camping and parking is prohibited year round.

Fees

The daily user fee is \$5.00 per vehicle. The annual Chequamegon-Nicolet National Forest user pass can be purchased at local vendors, Forest Service offices, or online for \$20/vehicle and a second pass for \$10.

Location

The Drummond Ski Trail is located south of Drummond, WI about one mile.

From US HWY 63 in Drummond, go south on Lake Owen Scenic Drive (FR 213) about 1 mile. Turn left onto access road into parking area.



“Every mile is two in the winter.”
- George Herbert

Trail Descriptions

Antler: A .9 km trail that connects Jack Rabbit, Antler Chute, & Boulevard Trails. (Level: Easier)

Antler Chute: A .4 km connector trail that provides a short cut from the Antler Trail to the west side of the Jack Rabbit Trail. (Level: Easier)

Boulevard: This 3.1 km trails acts as the main connection to all the trails in this system. (Level: Easier)

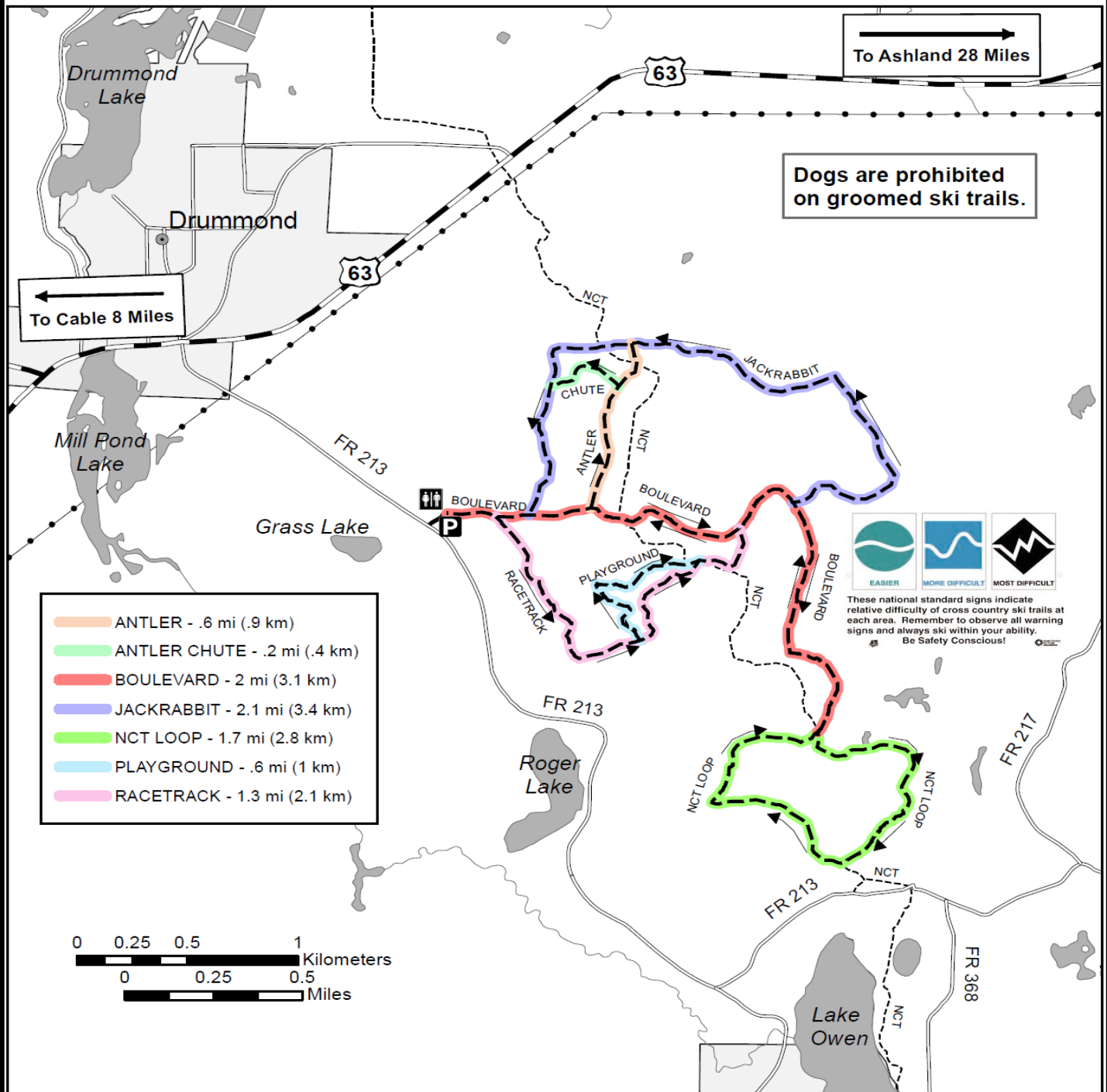
Jack Rabbit: A 3.4 km section of trail. (Level: Easier)

NCT Loop: A 2.8 km trail that incorporates a section of the North Country Scenic Trail that is groomed for skiing. (Level: More Difficult)

Playground: This 1 km trail off of the Racetrack trail has more rolling terrain. (Level: More Difficult)

Racetrack: This 2.1 km trail has rolling terrain. (Level: More Difficult)

Drummond Ski Trail



- ANTLER - .6 mi (.9 km)
- ANTLER CHUTE - .2 mi (.4 km)
- BOULEVARD - 2 mi (3.1 km)
- JACKRABBIT - 2.1 mi (3.4 km)
- NCT LOOP - 1.7 mi (2.8 km)
- PLAYGROUND - .6 mi (1 km)
- RACETRACK - 1.3 mi (2.1 km)

These national standard signs indicate relative difficulty of cross country ski trails at each area. Remember to observe all warning signs and always ski within your ability. Be Safety Conscious!

- City
- P Parking
- restroom icon Restrooms
- U.S. Highway
- Major Roads
- North Country Trail
- Ski Trail
- Lakes
- Powerline
- Rivers & Streams

Washburn Ranger District
 P.O. Box 578
 Washburn, WI 54891

Need more information?
on the web at:
www.fs.usda.gov/cnnf



USDA is an equal opportunity provider and employer

